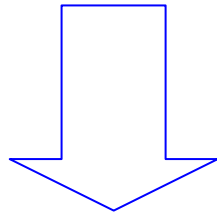


Prima apparecchiatura Post operatoria

Relatore: C. Papa

PRIMA APPARECCHIATURA

DOVE?

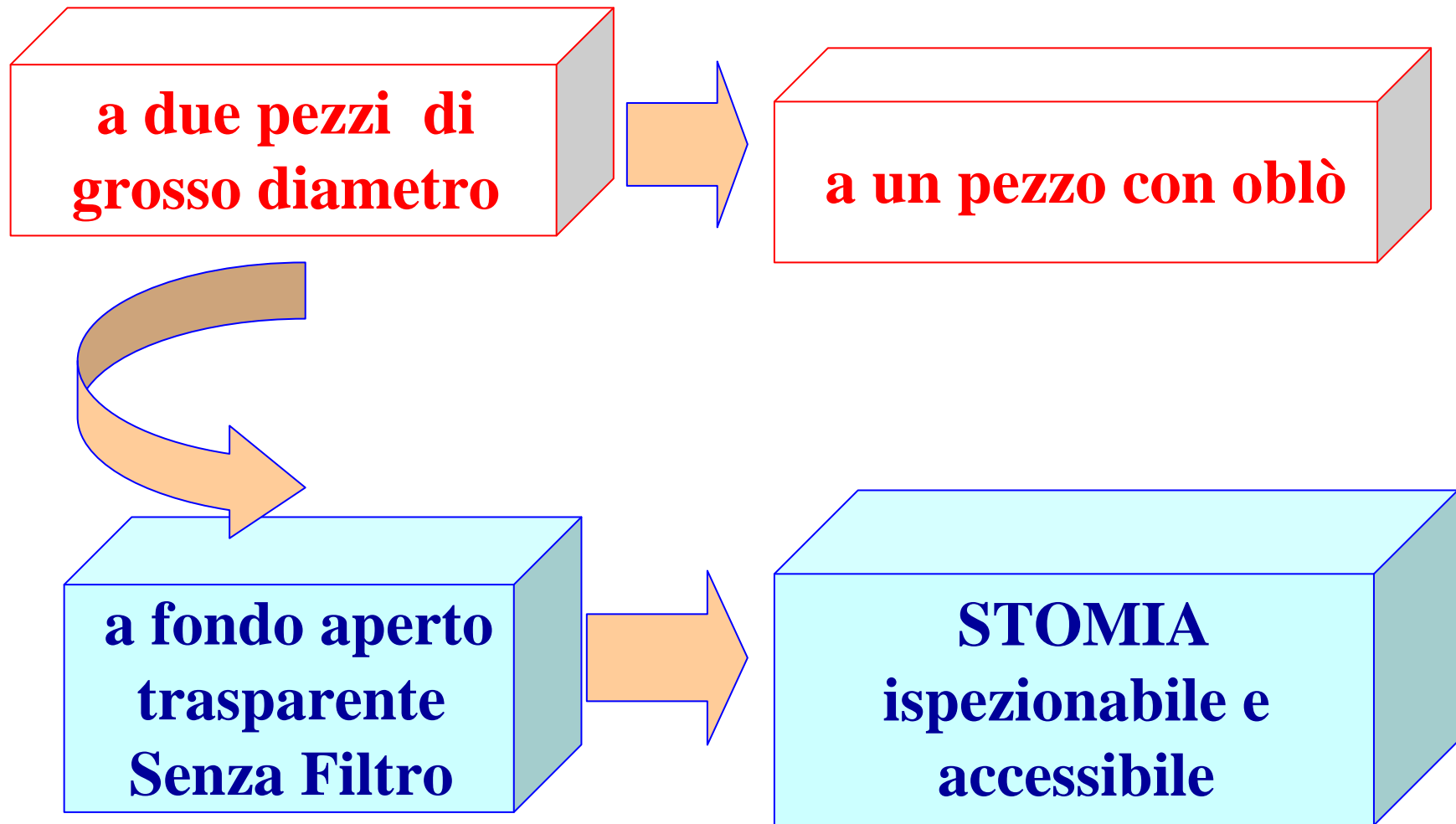


IN SALA

OPERATORIA



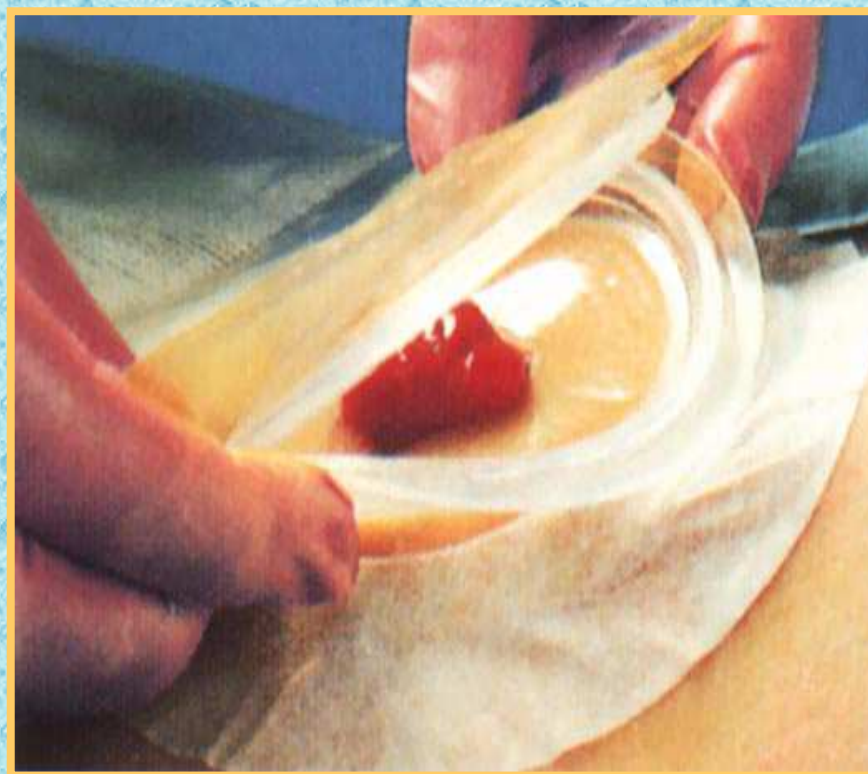
Prima Apparecchiatura: Caratteristiche del Presidio



APPARECCHIATURA SALA OPERATORIA

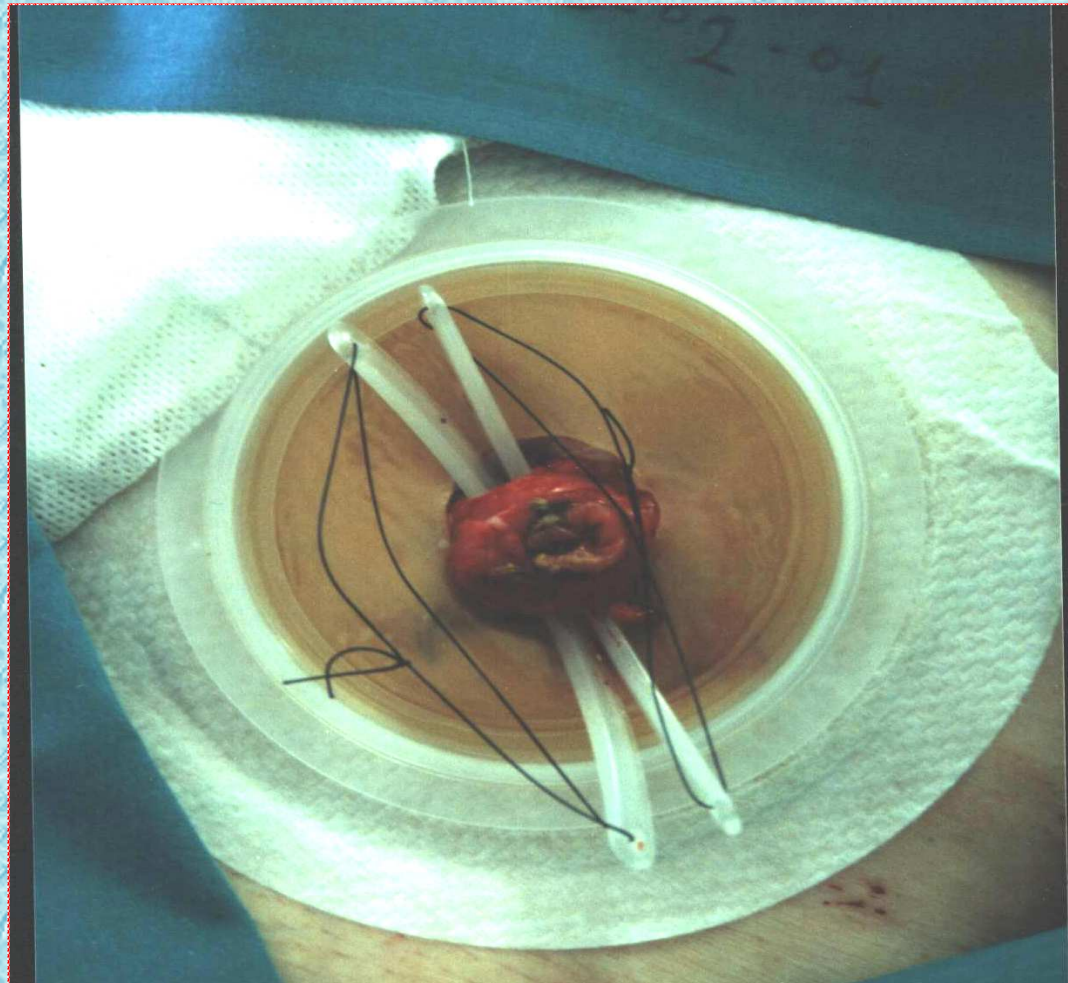


1 pezzo con oblò

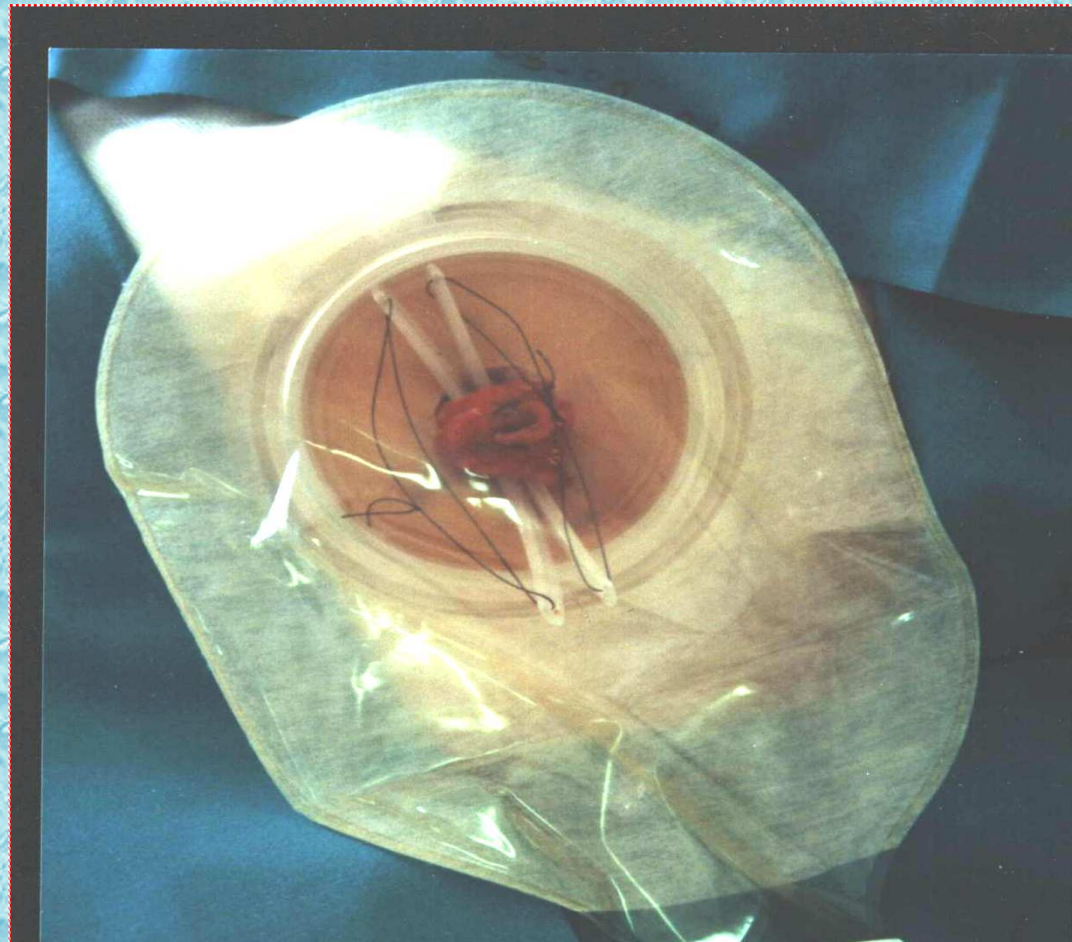


2 pezzi (soffietto)

STOMIA A CANNA DI FUCILE



STOMIA A CANNA DI FUCILE



Perché?



